

JAZZ ENSEMBLE AUDITION MUSIC

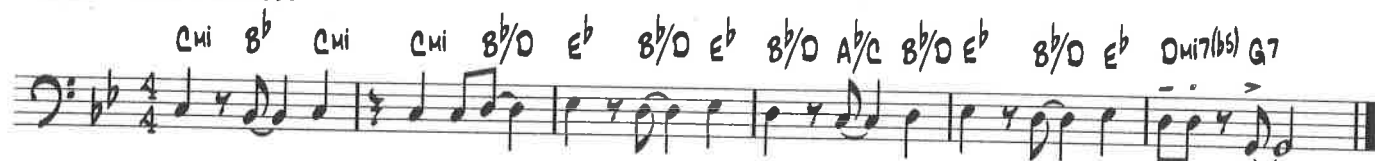
SCALE (CONCERT B \flat BLUES)

A ROCK $\text{♩} = 116-120$
8 \flat 7



CHART EXCERPTS

B1 ROCK $\text{♩} = 120-126$



B2 BOSSA $\text{♩} = 116-120$

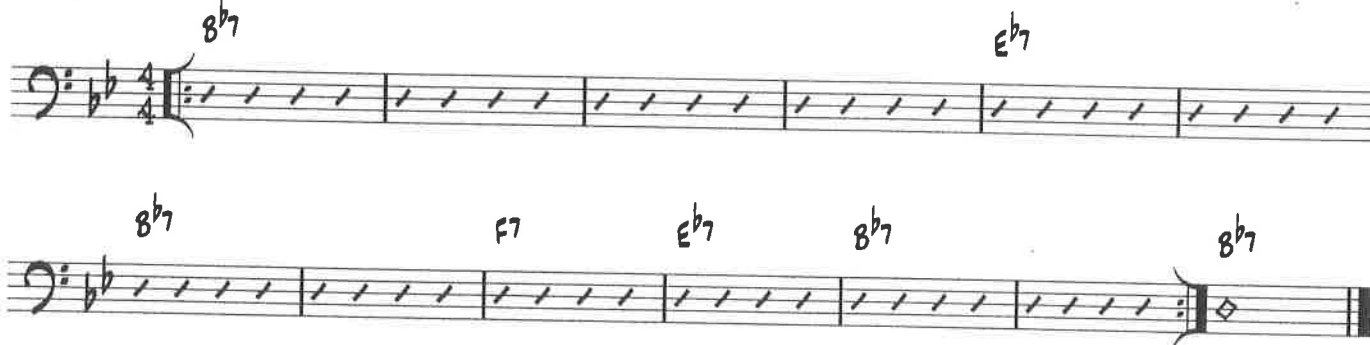


B3 SWING $\text{♩} = 120-126$
F7



IMPROVISATION (optional)

C ROCK $\text{♩} = 116-120$
8 \flat 7



- For this excerpt, use track 9 of the RHYTHM STUDIES & IMPROVISATION STUDIES CD attached to the inside back cover of the *Standard of Excellence Jazz Ensemble Method Director Score*. Listen to the solo you hear the 1st time through. Improvise the 2nd, 3rd, and 4th times through using the solo you heard as a model. The notes of the blues scale at the top of this page (Excerpt **A**) are good pitches to use when improvising.

SIGHTREADING

- Director will choose excerpt at audition.